



# HYDROFLYER



## 2021 DEALER CATALOGUE





The Next Generation of eFoils Has Arrived...

A cross between a hoverboard, a jet-ski, and a surfboard, the HydroFlyer™ is the most advanced personal watercraft ever created.

Riding the HydroFlyer™ is a whole new sport. The best way to describe it is "it feels like a cross between deep-powder snowboarding & flying, without any drag, bumps or shocks. Just pure glide"

With speed settings that range from mild to wild, and industry leading rider safety features, the HydroFlyer™ was designed for beginners and professional thrill-seekers alike.

With a reduced learning curve down to less than 15 minutes, now everyone can enjoy the world's latest eFoil craze with ease.

# HYDROFLYER™ DESIGN FEATURES

## DESIGNED FOR COMFORT

Ergonomically designed handle grips, scooped deck for increased responsiveness and forward facing rider position reduces rider leg fatigue over long sessions

## HANDLEBARS FOR STABILITY

Detachable handlebars makes it easier to balance, reduces wipeouts and shortens the learning curve for beginners considerably.

## STABILIZED BOARD DESIGN

Board design reduces drag during touchdowns and minimizes battery strain. Easier to balance and reduces falling.

## SAFETY WING & MAST

Unifoils patented 'Safety Foil' technology features a silicone edged soft wing tip and mast. Up to 5x the impact shock absorption of a normal carbon wing. Protects rider and equipment from major damage. Available in the Vortex 210

## WORLD CLASS ENGINEERING

Scientifically designed ultra-efficient wing designs reduce drag and allow for maximum glide and reduced battery strain.



# HOW DOES IT WORK?

Designed and assembled in Canada and Australia, under the strict oversight of leading hydrofoil brand, Unifoil. The HydroFlyer™ is truly a one-of-a-kind machine that delivers a one-of-a-kind experience.

The HydroFlyer™ e-foil is 100% electric, which means it is silent, requires no fuel, creates no fumes or pollution, recharges rapidly in any standard AC power outlet, and requires barely any maintenance. The HydroFlyer is 100% environmentally friendly and causes no impact to marine life and waterways.



The HydroFlyer™ uses a bluetooth controller attached to the handlebars to control the speed. The controller feeds the signal to the onboard computer, which in turn signals the lithium battery to power on the silent motor. Once the rider reaches a speed of around 3-4 knots, the power of lift and thrust begin to work its magic and the hydrofoil comes out of the water.

When the fun is over, The HydroFlyer™ easily packs away.



# TECH SPECS



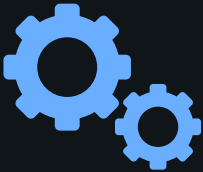
Top speed: 55km/h (34mph)



Ride Time: 120mins



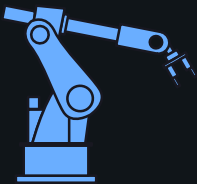
Battery Recharge Time: 3hrs



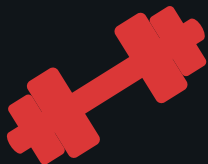
Engine Power: 5500W



Controller: Wireless Handheld



Board Construction: Waterproof EPS + Carbon  
Wings Construction: 100% Hi Modulus Carbon



Total Weight: 29-35 kgs



Warranty: 12 Months



# MODELS





# CRUISER MODEL

## HydroFlyer™ Cruiser

The cruiser is your everyday all rounder. Designed for everyone from the beginner all the way to pro, the cruiser features our unique V-nose entry for slicing through water and wind swells seamlessly. Enhanced hydrodynamic bottom curve and no catch beveled rails make for easy touchdowns and lift off. It has plenty of buoyancy and stability for learning, and reduced side to side rock for a smooth, easy ride, but is still light enough to go fast, really fast.



Size = 7' 5 x 34  
Volume = 160 litres

### Color Options

- 1 - Blue & White
- 2 - All Carbon Black

### Configuration Includes:

- E-foil board with deck grip
- Detachable handlebars
- Handheld controller
- Lithium-ion battery
- Mast & propulsion system
- Front wing
- Premium charger
- eFoil travel case
- eFoil board bag
- Accessories pouch
- Toolkit
- Users manual



Warranty = 12 month warranty on all parts.







# CLOUD MODEL

## HydroFlyer™ Cloud

HydroFlyer™ Cloud Inflatable - coming soon (pic close up)  
Our lightest board option, yet is up to 50% more buoyant. This high quality inflatable pumps to 16 PSI and is rock solid when inflated. Packs down making it easy to transport and safer to learn. We recommend this model for rentals, leaners, travelers and riders with limited storage space. Limits damage from flying, transport, or boat decks.



Size = 6'0 x 30

Volume= 150 litre

### Color Options

- 1 - Light Grey
- 2 - All Carbon Black

### Configuration Includes:



- E-foil board with deck grip
- Detachable handlebars
- Handheld controller
- Lithium-ion battery
- Mast & propulsion system
- Front wing
- Premium charger
- eFoil travel case
- eFoil board bag
- Accessories pouch
- Toolkit
- Users manual

- Warranty = 12 month warranty on all parts.





# SURF PRO MODEL

## HydroFlyer™ Surf Pro

This is our pro model. For intermediate to advanced riders. Lighter, faster, & more responsive. Less surface area and reduced volume allows for more speed, responsiveness and better maneuverability. Lighter weight boards with less volume make it harder for beginners to keep balance, but perfect for advanced riders into high speed carving and racing with minimum counterweight and drag.



Size = 5'0 x 25

Volume = 68 litres

### Color Options

1 - Blue & White

2 - All Carbon Black

### Configuration Includes:



- E-foil board with deck grip
  - Detachable handlebars
  - Handheld controller
  - Lithium-ion battery
  - Mast & propulsion system
  - Front wing
  - Premium charger
  - eFoil travel case
  - eFoil board bag
  - Accessories pouch
  - Toolkit
  - Users manual
- Warranty = 12 month warranty on all parts.





# WINGS



# Hyper 170

Our best selling all rounder wing. Easy to use, stable, and efficient. Slow to medium cruising speeds. Suits beginners to pros, and medium to lightweight riders. This is the recommended wing for most experienced riders.

- High Aspect
- Beginner to advanced
  - Maximum glide
  - Medium difficulty
  - Stable
  - Slower for turns



# Vortex 150

Our pro and advanced rider choice. Our fastest wing for maximum speed, responsiveness and carvability. Can be used by experienced and lightweight riders. Medium and very fast foiling. For tight turns and carving turns on waves.

- Fast
- Advanced
- Stable at speed
- Less surface area
- Handles top speed



# Vyper 190

Our brand new 2021 edition wing model. The Vyper strikes the perfect balance between stability, useability and performance. This wing was designed for maximum speed, responsiveness and glide all in one. Can be used by intermediate to advanced. Medium and very fast foiling.

- Fast
- Medium to Advanced
- Balance between speed and glide
- Medium surface area
- Handles fast and also slow speeds



# Vortex 210 Cloud Tech™

## Safety Wing

The perfect all rounder for beginner e-foilers. Can be ridden by anyone from beginners wanting to improve and go faster, all the way to the most advanced rider who wants to stay safe. Responsive and intuitive wing, yet great for stability, and rail-to-rail turns. Can be used for both stable and advanced riding styles.

- Surf Style
- Beginner friendly
  - Easy
  - Stability
- Slow and steady to medium





# BOARDS





# HydroFlyer™ Cruiser

## HydroFlyer™ Cruiser

Our best seller. The original cruiser is your everyday all rounder. Designed for everyone from the beginner all the way to pro, the cruiser features our unique V-nose entry for slicing through water and wind swells seamlessly. Enhanced hydrodynamic bottom curve and no catch beveled rails make for easy touchdowns and lift off. Has plenty of buoyancy and stability for learning, and reduced side to side rock for a smooth, easy ride, but is still nimble enough to go quick, really, really quick.

Size = 7' 5 x 34

Volume = 160 litres

### Color Options

- 1 - Blue & White
- 2 - All Carbon Black

### Contains

- E-foil board with deck grip
- Detachable padded handlebars
- Board bag



# HydroFlyer™ Cloud

## HydroFlyer™ Cloud Inflatable

Our lightest weight board option, yet is up to 50% more buoyant. This high quality inflatable is made from rubber abd pumps to 16 PSI. It is rock solid when inflated and packs down making it easy to transport and safer to learn. We recommend this model for rentals, leaners, travelers and riders with limited storage space. Limits damage from flying, transport, or boat decks.

Size = 6'0 x 30

Volume = 150 litre

### Color Options

- 1 - Blue & White
- 2 - All Carbon Black

### Contains

- E-foil board with deck grip
- Detachable padded handlebars
- Board bag



# HydroFlyer™ Pro Surf

## HydroFlyer™ Pro Surf

This is our pro model. For intermediate to advanced riders. Lighter, faster, & more responsive. Less surface area and reduced volume allows for more speed, responsiveness and better maneuverability. Lighter weight boards with less volume make it harder for beginners to keep balance, but perfect for advanced riders into high speed carving and racing with minimum counterweight and drag.



Size = 5'0 x 25  
Volume = 68 litres

### Color Options

- 1 - Blue & White
- 2 - All Carbon Black

### Contains

- E-foil board with deck grip
- Detachable padded handlebars
- Board bag





# EXTRAS



# HydroFlyer™ Battery

## HydroFlyer™ Battery

Extra batteries come in handy when you're out on the sea away from a power outlet and want to double the length of ride time. Simply purchase a spare battery and ride for twice as long without needing to come in and recharge.

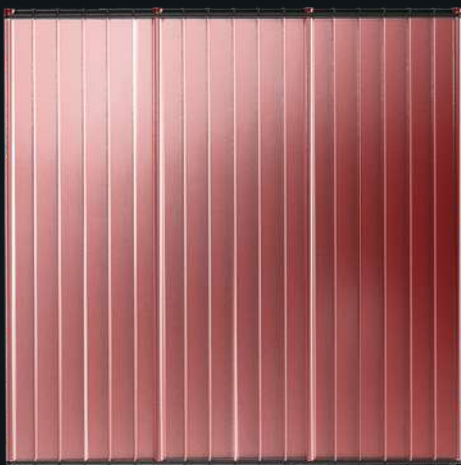
The HydroFlyer™ is powered by a supercharged advanced lithium-ion battery. Built robust to handle the toughest of ocean conditions, it is the most powerful electric battery for its size available today.

This is one of the most advanced batteries to ever power an eFoil. Battery life is up to 120 minutes depending on conditions and riding style.



### Features

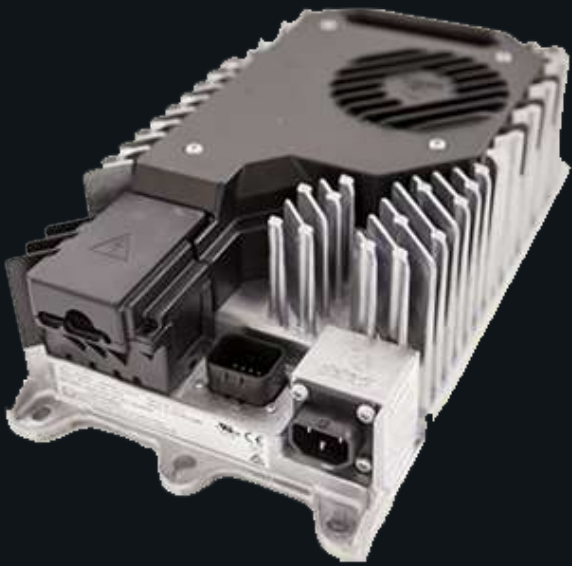
- 42 AH - 2.4 KWh capacity - 52v Nominal - High Voltage
- Replaceable and rechargeable
- 3 hour charge time
- 120 minute ride time
- 12 month warranty
- Fully waterproof and submersible
- Weighs 11 kgs
- Recharges in standard AC power outlet
- 58.8v - Low-Voltage 42v



# HydroFlyer™ Rapid Battery Charger

## HydroFlyer™ Premium Rapid Charge Battery Charger

Charges Battery in 3 hours or less.  
Plug in to any standard A/C power  
socket.



### Plug Options

- Aus
- UK
- USA
- Europe



# HydroFlyer™ Handheld Controller

## HydroFlyer™ Handheld Controller

Ergonomically designed controller can be handheld or fit inside the handlebars. With 5 different speed levels, and full LCD display, this is a controller you can count on when it matters. Featuring wireless bluetooth connectivity, signalling an advanced onboard computer system designed in Canada.



### Features

- Built in throttle or handheld options
- 100% completely waterproof and rechargeable
- Floats on the surface so it never gets lost
- Safety lock systems automatically turns off motor when trigger is released or submerged
- HD screen displays battery life, ride time and more
- Ergonomically designed to reduce hand cramps
- Powerful wireless bluetooth technology
- Bluetooth connection
- Trigger Control Throttle (5 Speed Levels)
- LED display speed and battery levels



# HydroFlyer™ Propulsion System

## HydroFlyer™ Propulsion System

Our unique water cooled direct drive system was designed with both safety and hi-performance in mind. We have created a unique cooling system to ensure our battery and motor operates at maximum efficiency for extended battery life. Our rider feedback system monitors the motor and battery and sends feedback to the rider.

### Features

- Small and hydrodynamic motor casing designed for maximum glide, efficiency and reduced drag
- Almost silent. Reduced moving parts means minimal noise
- Water cooled direct drive built to run all day
- Alloy propeller blades with protection ring for enhanced for safety, stability and lowered vibration
- Low maintenance and built to last in tough conditions
- Includes
  - -eFoil System Mast & Motor
  - - Accessories and Accessories Bag







# PRICING



See PRICING LIST.pdf

This is included in your Folder



# CONTACT



WINDPRODUCTION SIMONE FIASCHI

VENDITA

ASSISTENZA E RICAMBI

NOLEGGIO E COLLABORAZIONI

PER INFORMAZIONI CONTATTI

TEL. 338.6440072 - [wind@winproduction.it](mailto:wind@winproduction.it)

